

Please note: since this user guide was printed, some changes may have been made to how the TV-photo 100 is programmed. A download of the most recent version of the user guide is available from: www.geemarc.com

Parts Supplied

The packaging contains the following parts:

- 1 TV-Photo 100 remote control
- 1 mini USB/3.5mm Jack cable
- 1 user guide
- 10 plastic key covers

The TV-Photo 100 is powered by two AAA 1.5 volt (Alkaline) non-rechargeable batteries. These are not provided.

The TV-photo 100 requires the correct software to function with your TV. You will need access to either a desktop PC or laptop with Internet access so that you can download an application that allows you to find and download the correct software to the TV-photo 100. It is not possible to use TV-photo 100 without this software.

1. Download the Geemarc application to your computer.
2. The application uploads software to the TV-photo 100.
3. Once the software is uploaded, you can use the TV-photo 100 with your TV.

Fitting the Batteries

1. To fit the batteries, carefully push down and slide open the battery cover.
2. Insert two AAA 1.5 volt

(Alkaline) batteries into the battery holder, observing the correct +/- battery polarities. Note: incorrect fitting of the batteries may damage the unit.

3. Slide the battery cover back over the battery compartment to close it.

Downloading the Application

1. Go to our website www.geemarc.com
2. At the search bar (at top of the page) type in «TV-photo100» then press enter.
3. On the TV-photo 100 page, go to the « product files » section and click on « software TV-photo100» to download the application to your computer.
4. Once the application has downloaded, install and open it with WINRAR or WINZIP. WinRAR and WinZIP are compressed file formats that use less data. If your

computer does not read this file format, you can download a free reader at these two addresses : www.winrar.com & www.winzip.com

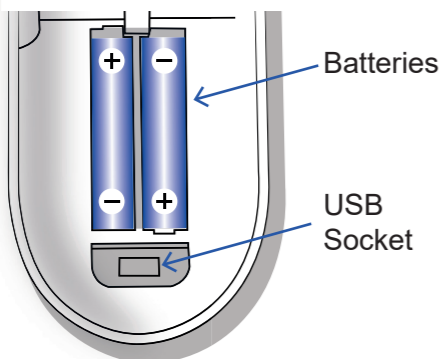
5. Open the Geemarc software : «Geemarc.exe» (NOTE: A more recent version of the software maybe available). Follow the on-screen prompts and install the application.
6. Select your language and press OK.
7. Press next.
8. Choose INSTALL and authorise the installation of the application on your computer.
9. Select Finish.

Uploading the Correct Software to the TV-photo 100

NOTE: To proceed to the next step, the batteries must be fitted to the TV-photo 100. Open Geemarc application installed on your computer. If you are given an option to download an update for the application, please accept.

ATTENTION: Turn off sound devices (such as microphones and speakers) connected to your computer, or unplug them before uploading the software to the remote. Do not listen to audio / visual media (e.g. music, games, videos) on the computer at the same time as programming the remote control. Set the volume level on your computer to at least 80%. You can adjust the volume level on your computer

by going to settings > System > Sound > Master Volume.



Fitting the USB/3.5mm Jack cable

1. Remove the battery cover from the TV-photo 100. With the USB/3.5mm cable provided, carefully plug the USB end of the cable into the USB socket (located inside the battery compartment).
2. Plug the 3.5mm Jack end of the cable into your computers audio / headphone output.

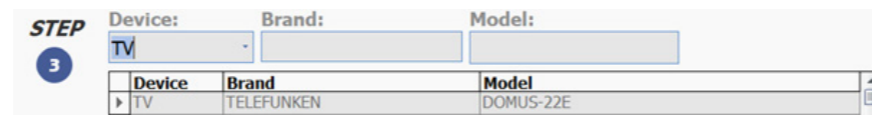
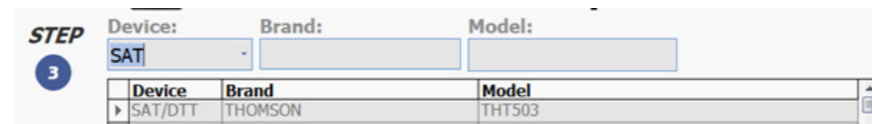


3. The application will need the brand and model of your TV. You can find this information on a label on the back of the TV, in the User Guide of the TV or on the packaging.

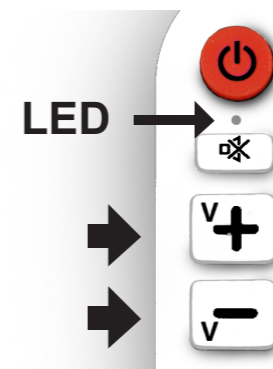
If the application doesn't have your TV model, try choosing a similar model from the same brand (sometimes TV set manufacturers use the same remote control for a range of models).

You can also email : unetec@uneteconline.com with the brand and model of your TV. It will be added to the applications' database, or a similar model that uses the same remote will be suggested.

4. Under «Device», select TV, DTT, DVD, SAT depending on whether you want to use the TV-photo 100 with a TV or other device such as a satellite set top box receiver (SAT), DVD player (DVD), or terrestrial set top box (DTT). To simplify your search, type the brand and model of your TV in the «brand» and «model» fields.



5. Press and hold the [V+] and [V-] keys of the remote control for 3 seconds until the LED light under the power button flashes.



6. On the application, click Download to transfer the programming software to the TV-photo 100.

Note: If the application says the software was successfully transferred but the LED on the remote continues to flash, it means the transfer failed. Repeat step 6. if this happens. Further options : Check the

output headset level in order to be sure it is not too low. Restart your computer in order the software finishes installing.

7. Disconnect the USB/3.5mm Jack cable from the TV-photo 100. You can now use the TV-photo 100 with your TV.

How to use DEVICE and MEMORY modes

The TV-photo 100 has two modes: DEVICE and photo MEMORY.

- In DEVICE mode, you can use the TV-photo 100 in a similar way to the remote control supplied with your TV. For example, to select channel 1 on the TV-photo 100, press the «1» photo memory button.

- In photo MEMORY mode, you can use the photo buttons to select various channels that you have programmed into the TV-photo 100 (see programming your picture memory). For

example, you can program photo memory button «5» so that pressing it selects channel 13.

How to Switch Between Photo MEMORY and DEVICE modes :

How to switch from Photo MEMORY mode to DEVICE mode :

- Press and hold the M button for 3 seconds and release it as soon as the LED light under the M button lights up. You will then see the LED light under the power button lights up to show that your remote is now in DEVICE mode.

How to switch from DEVICE mode to Photo MEMORY mode :

- Press and hold the M button for 3 seconds and release it as soon as the light under the power button

button lights up. You will then see the LED light under the button **M** lights up to show that your remote is now in Photo MEMORY mode.

Note: If you want to know which mode your remote is in:

Press the **M** button once. If the LED under the **⏻** button lights up, the remote is in DEVICE mode.

If the LED under the **M** button lights up, the remote is in Photo MEMORY mode.

Programming your picture memory

Before you can assign a channel to each Photo Memory Button (0 to 9), make sure TV-photo 100 is in MEMORY mode.

1. Press and hold the **M** button for 6 seconds and release it as soon as the LED light under the **⏻** power button starts to flash. The LED will stop flashing and stay on to show that the remote is now in STORE mode.

Note: If your remote is in Photo MEMORY mode as you start step 1. the LED light under the **M** button will briefly light up before the one under the power button **⏻** starts flashing.

2. Select a TV channel that you wish to assign to a Photo Memory Button.
3. Press once on the **M** button.
4. Press the Photo Memory Button to assign the TV channel selected in step 2. The LED light under the power button **⏻** will flash 3 times.

5. To assign further TV channels to Photo Memory Buttons, repeat the process from step 2, or to exit the STORE mode, press the **M** button once, or wait 30 seconds without pressing any buttons.

Note: If no buttons are pressed within 30 seconds during the programming process, the remote will automatically exit the STORE mode.

Example: In STORE mode, to assign channel 12 to Photo Memory Button 1, and channel 8 to Photo Memory Button 2.

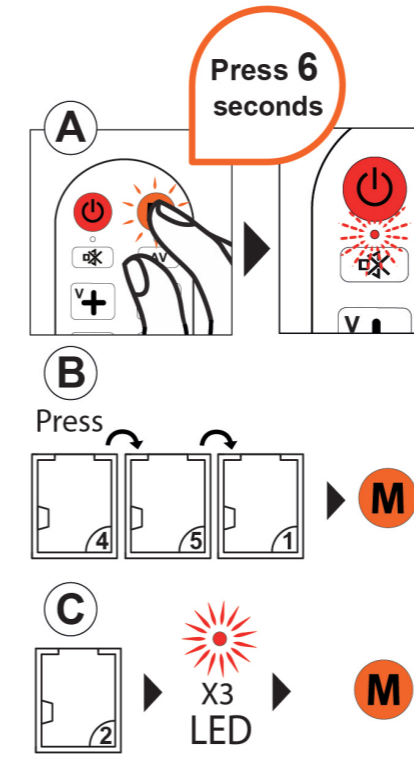
1. Press the **M** button (for 6 seconds) then release it when the LED light under the **⏻** button starts to flash.
2. Press 1, then 2.
3. Press **M** button once.
4. Press(1)(LED light under the **⏻** power button flashes 3 times).
5. Press (8).
6. Press **M** button once.

7. Press(2)(LED light under the power **⏻** button flashes 3 times).
8. Press the **M** button once (or wait 30 seconds without pressing any buttons to exit STORE mode).

Example: In STORE mode, to assign TV channel 451 to Photo Memory Button 2.

- A. Press the **M** button (for 6 seconds) then release it when the LED light under the **⏻** button starts to flash.
- B. Press 4, then 5, then 1.
- C. Press the **M** button once.
- D. Press (2) (LED light under the power **⏻** button flashes 3 times).
- E. Press the **M** button once (or wait 30 seconds without pressing any buttons to exit STORE mode.)

Quick explanatory diagram for programming the channel (451) in photo memory (2)



ATTENTION: NOTE: It is not possible to assign TV channels to the Power, Mute, AV, V+, V-, P UP, P DOWN, Back and OK function buttons.

Changing the Channels that are assigned to the Photo Memory Buttons

- First method: Repeat the programming procedure from step 2. Any of the Photo Memory Buttons that have previously been assigned to a TV channel can be reprogrammed.

NOTE: This will replace a TV channel that had previously been assigned to a Photo Memory Button.

- Second method: To erase ALL TV channels that were previously assigned to Photo Memory Buttons, press and hold the **M** and **AV** buttons until the LED light under the **⏻** power button flashes 3 times.

Resetting your Remote to the Factory Settings

- Press and hold the **⏻** and buttons **⏏** until the LED light under the **⏻** power button flashes 3 times. This will erase everything that had been programmed and uploaded to the TV-Photo 100.

NOTE: All data will be erased from the TV-photo 100 and you will no longer be able to use it with your TV in DEVICE or MEMORY mode. To use the remote control, please reinstall the TV-photo100 application.

Getting Pictures for the Photo Memory Buttons

A template of the most popular TV channel logos in the UK, France and Germany is available to download from the product page of the TV-photo 100 on

our website. Once cut out, they can be slide under the plastic window of the Memory Buttons to keep firmly in place.

DECLARATIONS: UKCA Directives

Geemarc Telecom SA hereby declares that this TV-Photo100 is in compliance with the essential requirements and other relevant provisions of the Radio Equipment Directive 2014/53/UE. The UKCA declaration of conformity may be consulted at www.geemarc.com

REGULATORY COMPLIANCE

FCC CLASS B

NOTE: This equipment has been tested and found to comply with the limits for a Class B digital device, pursuant to Part 15 of FCC Rules.

These limits are designed to provide reasonable protection against harmful interference in a residential installation. This equipment generates, uses and can radiate radio frequency energy and, if not installed and used in accordance with the instructions, may cause harmful interference to radio communications.

However, there is no guarantee that interference will not occur in a particular installation. If this equipment does cause harmful interference to radio or

television reception, which can be determined by turning the equipment off and on, the user is encouraged to try to correct the interference by one or more of the following measures:

- Re-orient or relocate the receiving antenna.
- Increase the separation between the equipment and receiver.
- Connect the equipment into an outlet on a circuit different from that to which the receiver is connected.
- Consult the dealer or an experienced radio TV technician for help.

NOTICE: This class B digital apparatus complies with Canadian ICES-003. This product meets the applicable Industry Canada technical specifications.

This device complies with Part 15 of the FCC Rules. Operation is subject to the following two conditions:

- (1) this device may not cause harmful interference, and
- (2) this device must accept any interference received, including interference that may cause undesired operation.

Recycling Directives

The WEEE (Waste Electrical and Electronic Equipment) has been put in place for the products at the end of their useful life are recycled in the best way.

When this product is finished with, please do not put it in your domestic waste bin. Please use one of the following disposal options:

- Remove the batteries and deposit them in an appropriate WEEE skip. Deposit the product in an appropriate WEEE skip.

- Or, hand the old product to the retailer. If you purchase a new one, they should accept it. Thus if you respect these instructions you ensure human health and environmental protection.

Garantee

Geemarc guarantee TVphoto-100 for the period of two years. The guarantee does not cover accidents, negligence or breakage to any parts. The Geemarc guarantee in no way limits your legal rights. The product is covered by the legal guarantee of conformity as provided by applicable law.

Important: YOUR RECEIPT IS PART OF YOUR GUARANTEE AND MUST BE RETAINED AND PRODUCED IN THE EVENT OF A WARRANTY CLAIM.

EEC and WEEE Declarations: This product respects the UKCA and WEEE.

Marking. The declarations of conformity can be found at www.geemarc.com



For product support and help visit our website at www.geemarc.com
E-mail : help@geemarc.com
telephone **01707 387602**
lines are open 09h00 to 16h00 Mon to Fri
Parc de l'Etoile, 2 Rue Galilée, 59760 Grande-Synthe, France.

Made for Geemarc Telecom S.A. in China



Customizable paper sheet for memory button

